

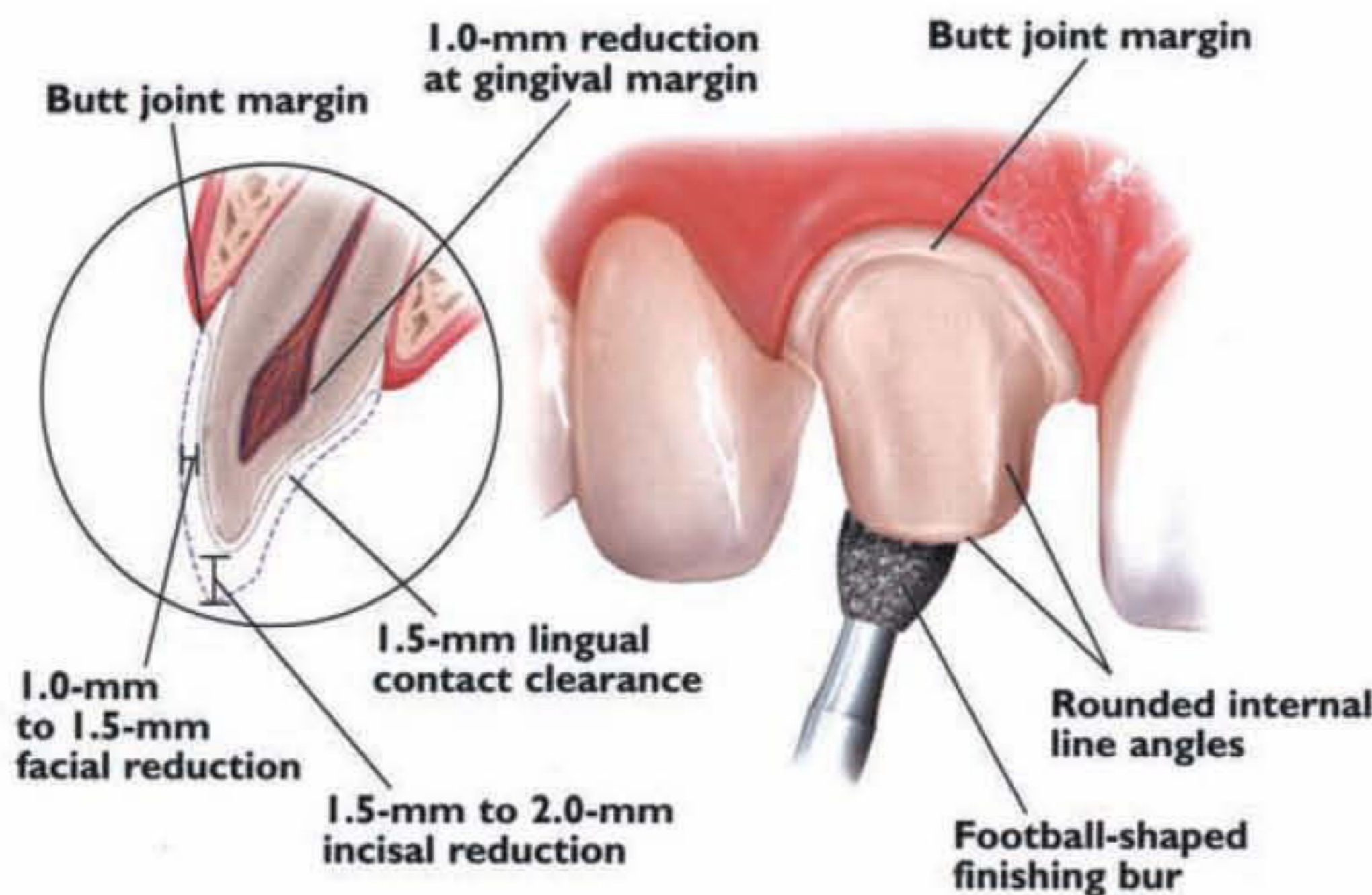
For IPS e.max® restorations

		IPS e.max Ceram/ZirPress	IPS e.max ZirCAD	IPS e.max CAD/Press
Anterior	Crown		✓	✓
	Veneer	✓		
	Bridge		✓	✓
Posterior	Crown		✓	✓
	Bridge		✓	

### Anterior Chairside Preparation Guide

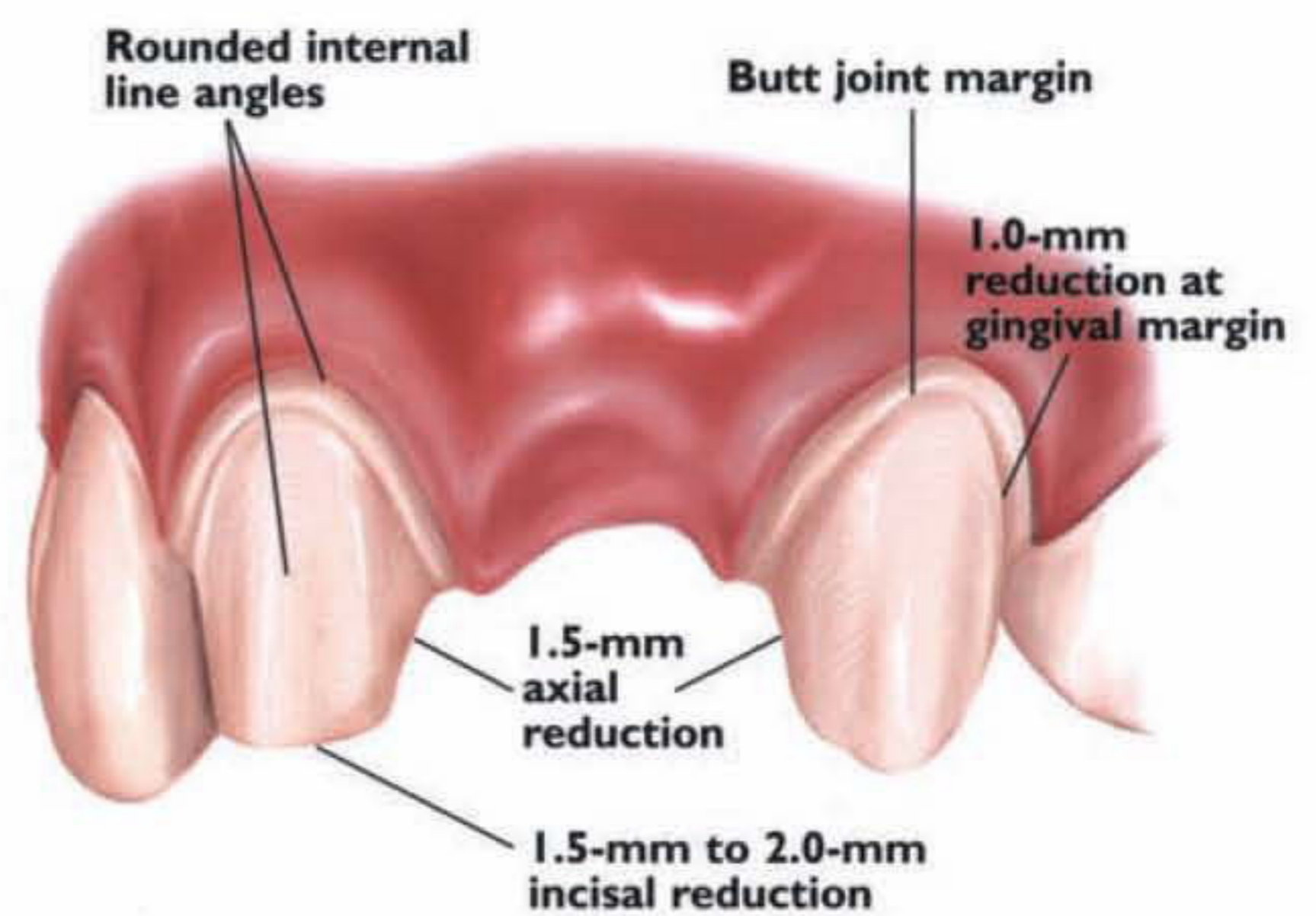
## Full-Coverage Restorations

### ANTERIOR CROWN PREPARATION



## 3-Unit Bridge Restorations

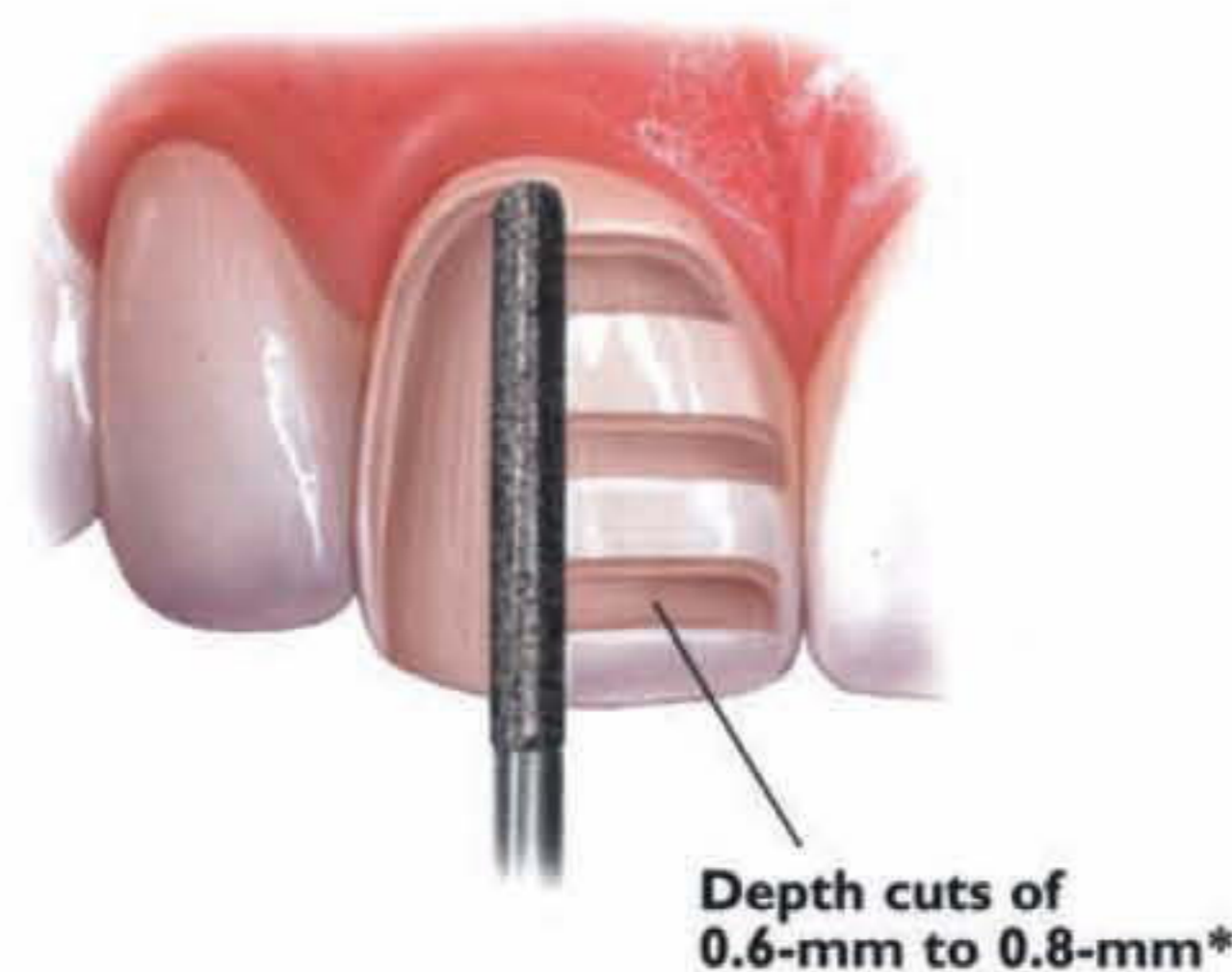
### 3-UNIT BRIDGE PREPARATION



## Veneers

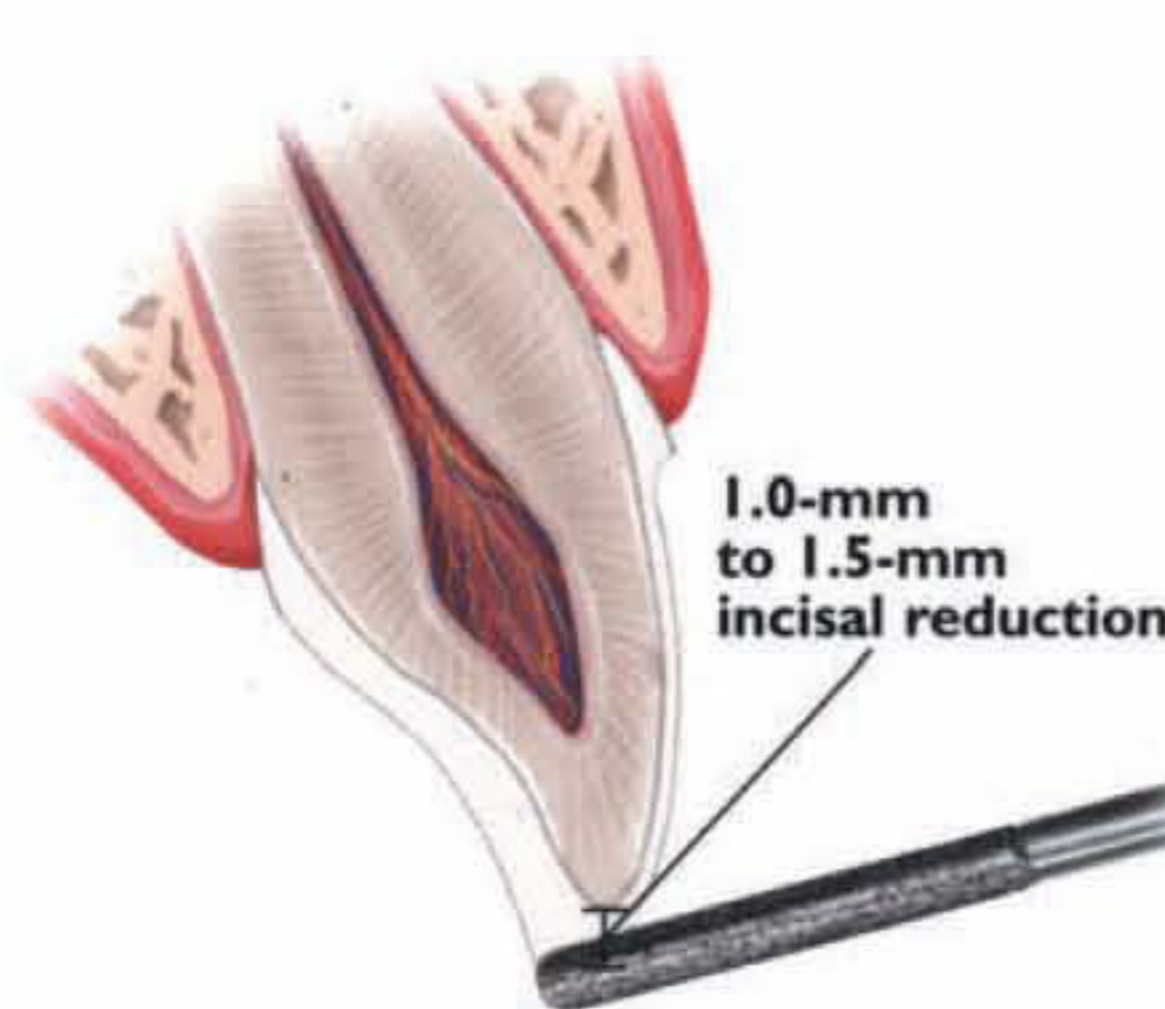
### VENEER PREPARATION

A medium grit, round-ended, diamond bur is used to remove a uniform thickness of facial enamel by joining the depth-cut grooves.



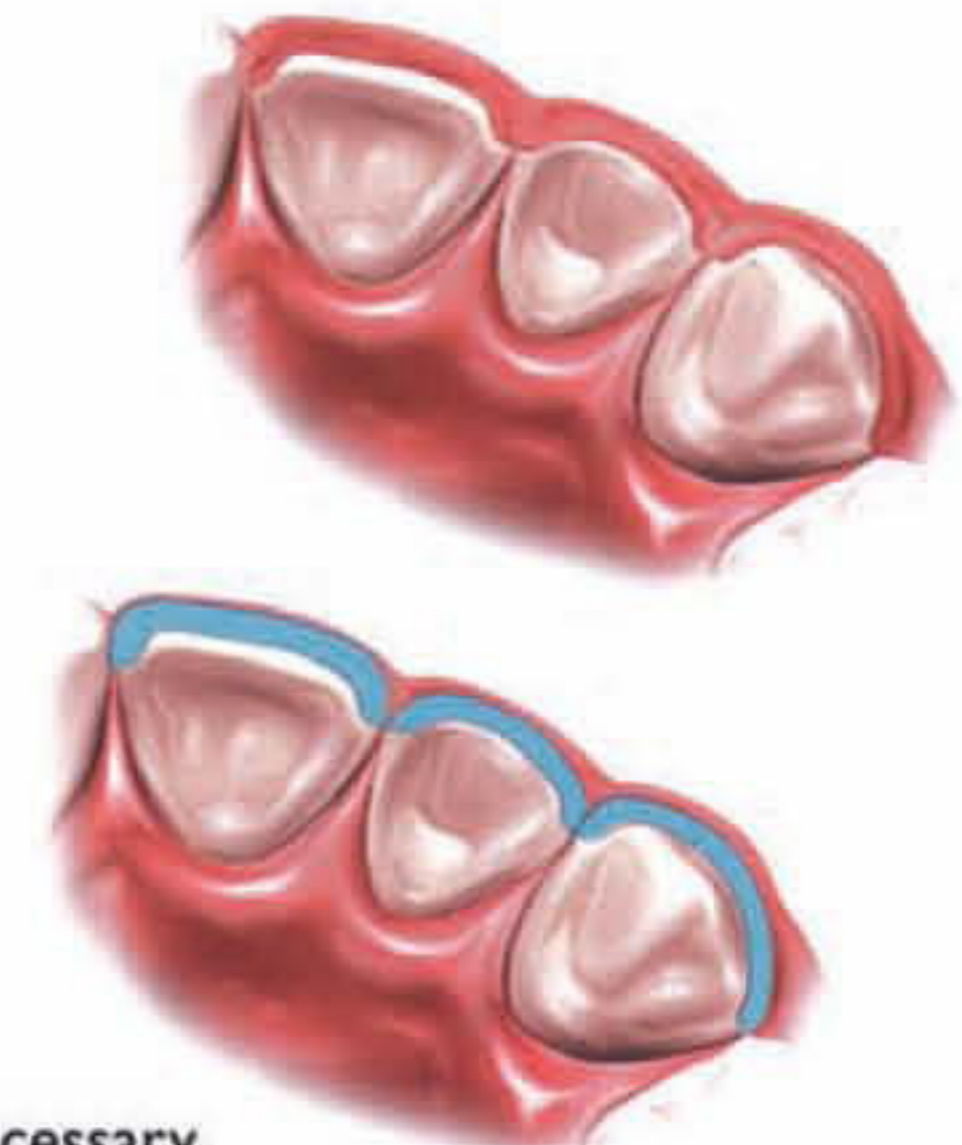
### INCISAL PREPARATION

The diamond bur is angled to bevel back the incisal edge.



### CHAMFER MARGINS

Correct preparation of the chamfer margins interproximally allows the appropriate bulk of porcelain.

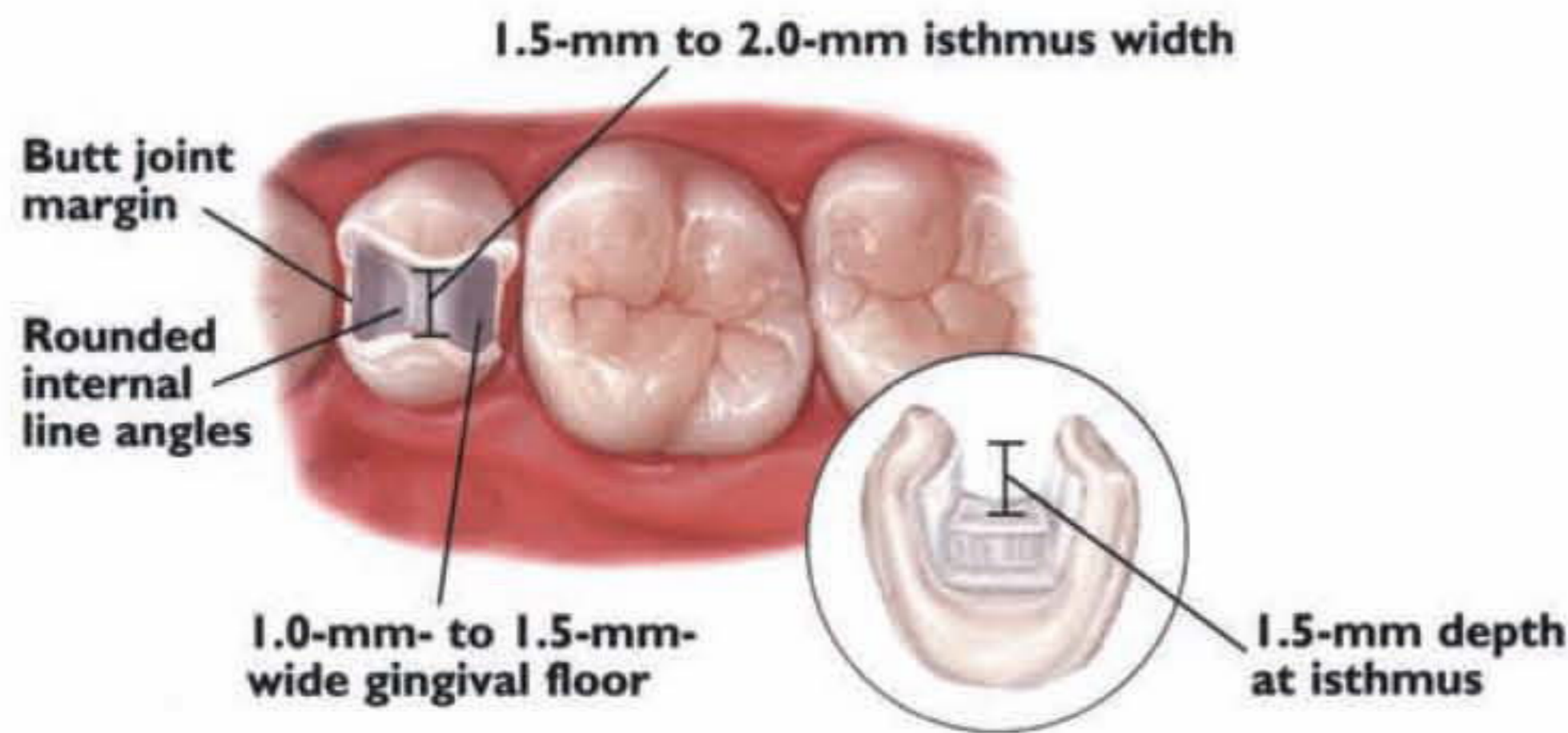


\*Please note: For additional masking capabilities and/or layering techniques, further reduction may be necessary. Contact your laboratory for further information.

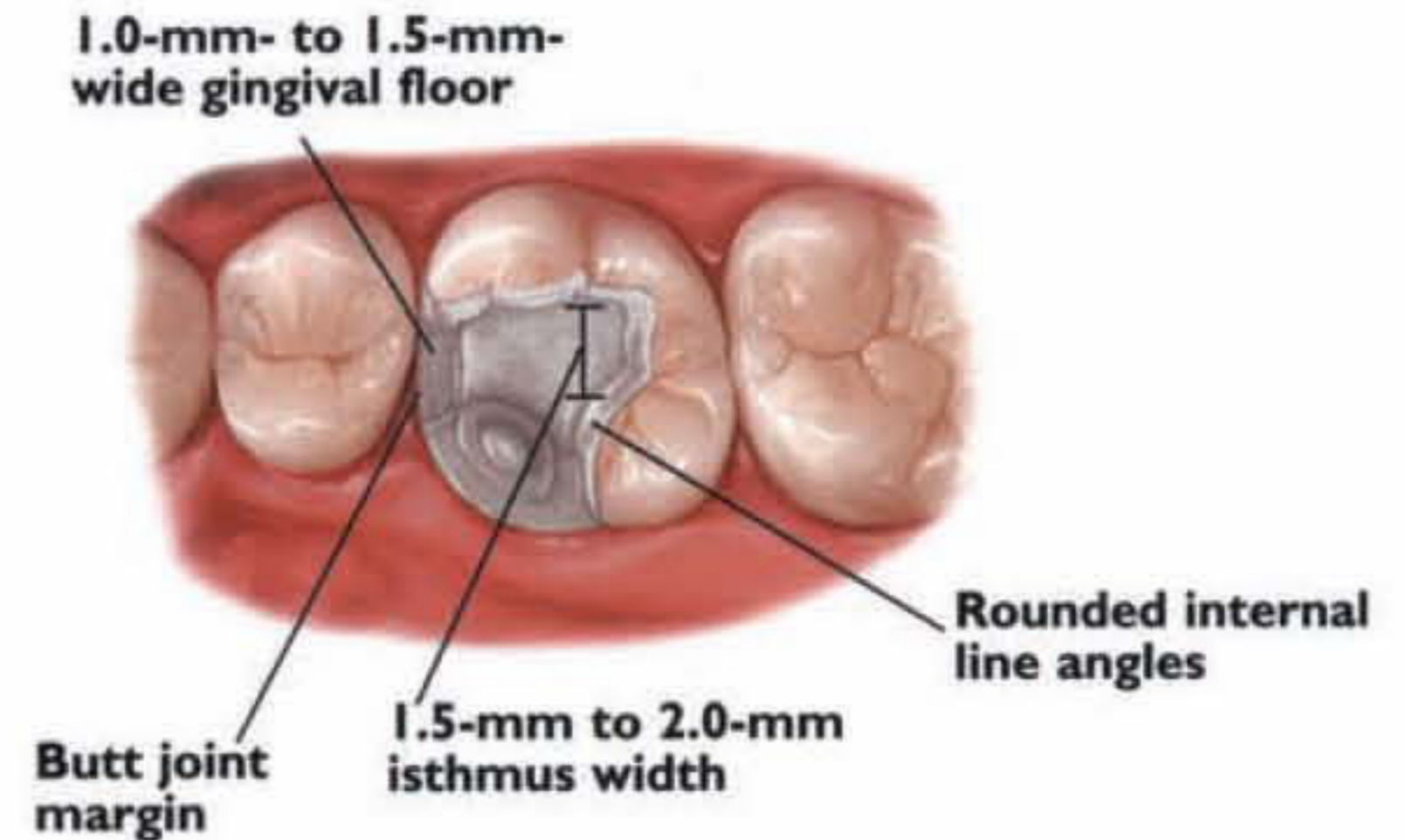


## Inlays/Onlays

### INLAY PREPARATION

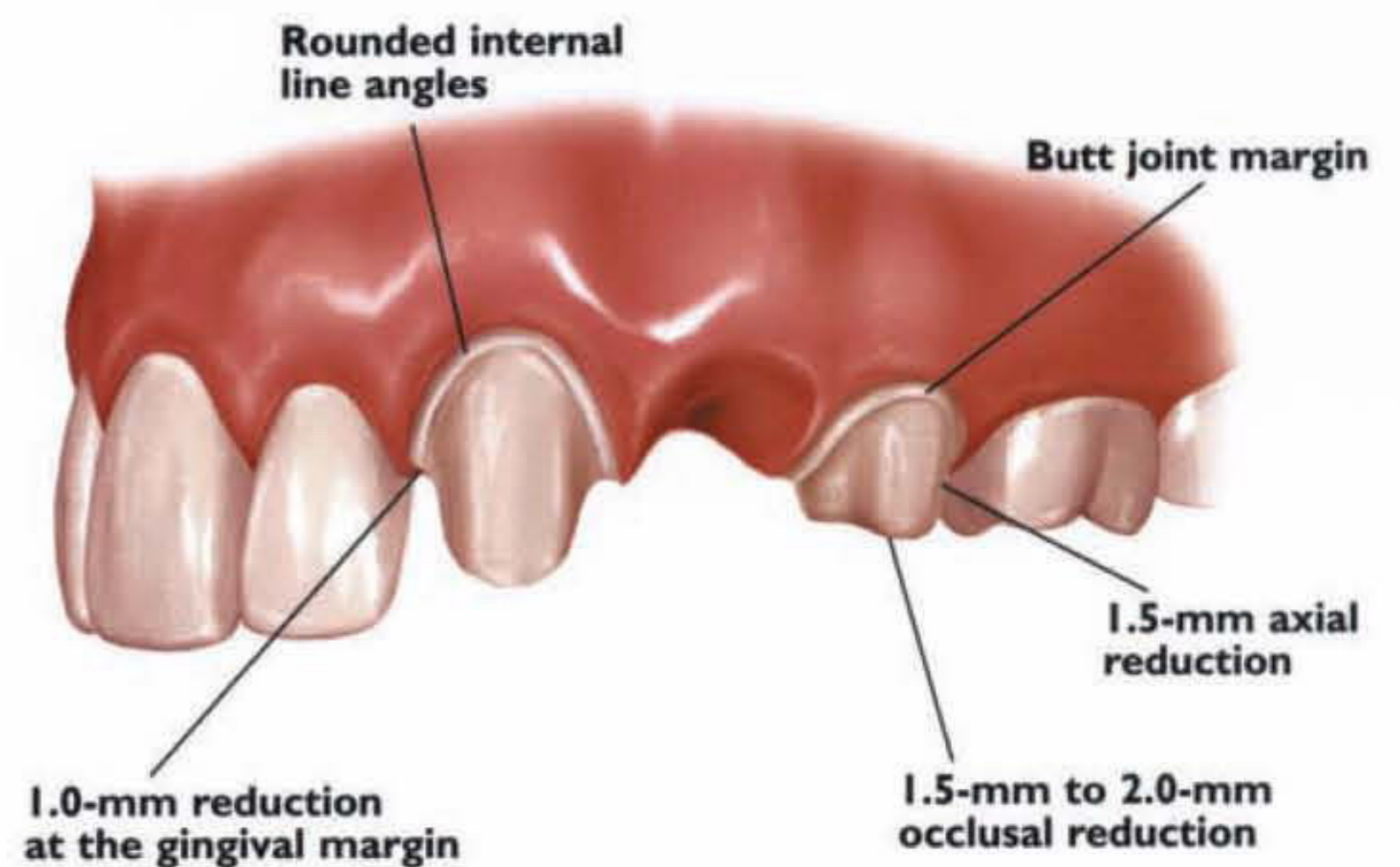
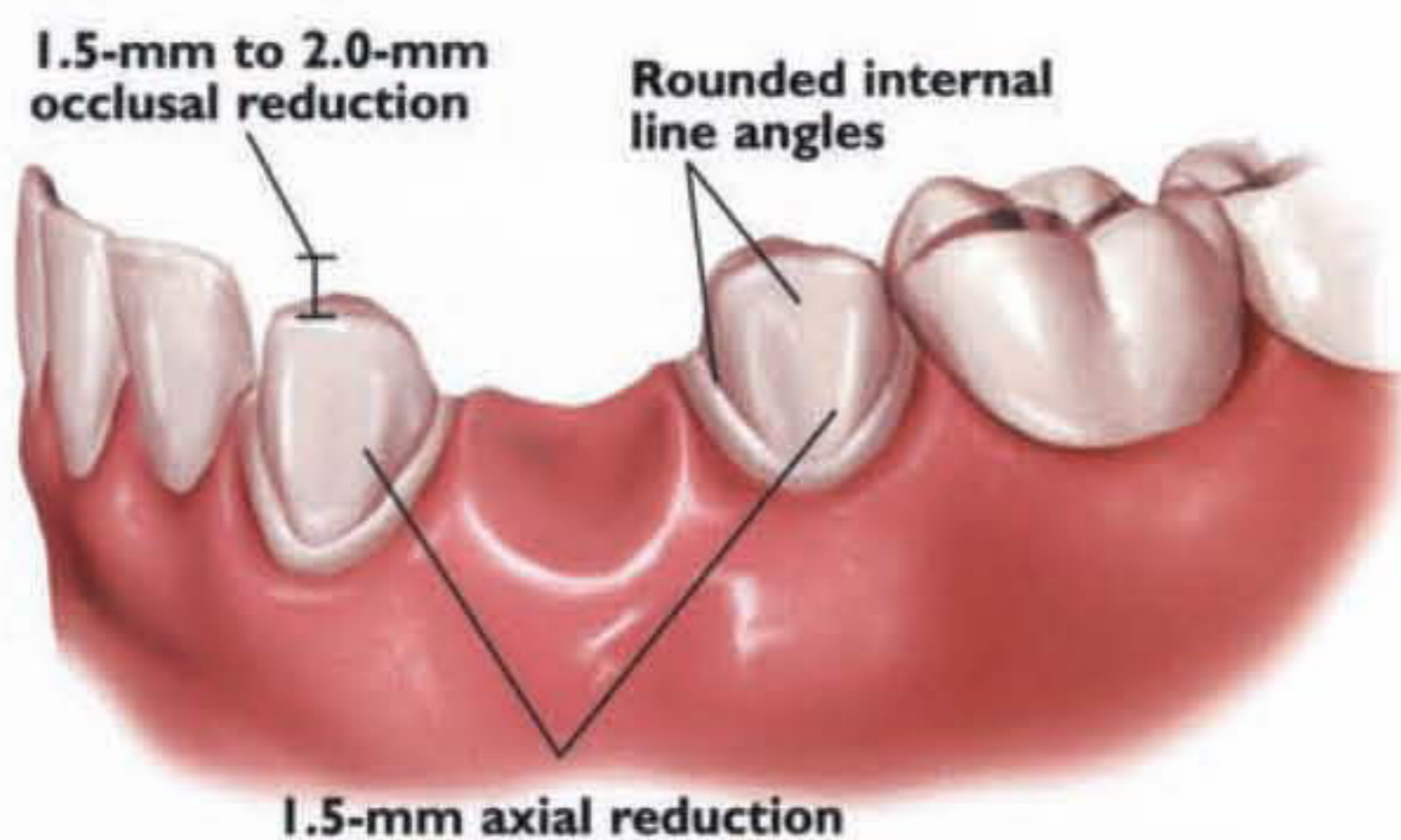


### ONLAY PREPARATION



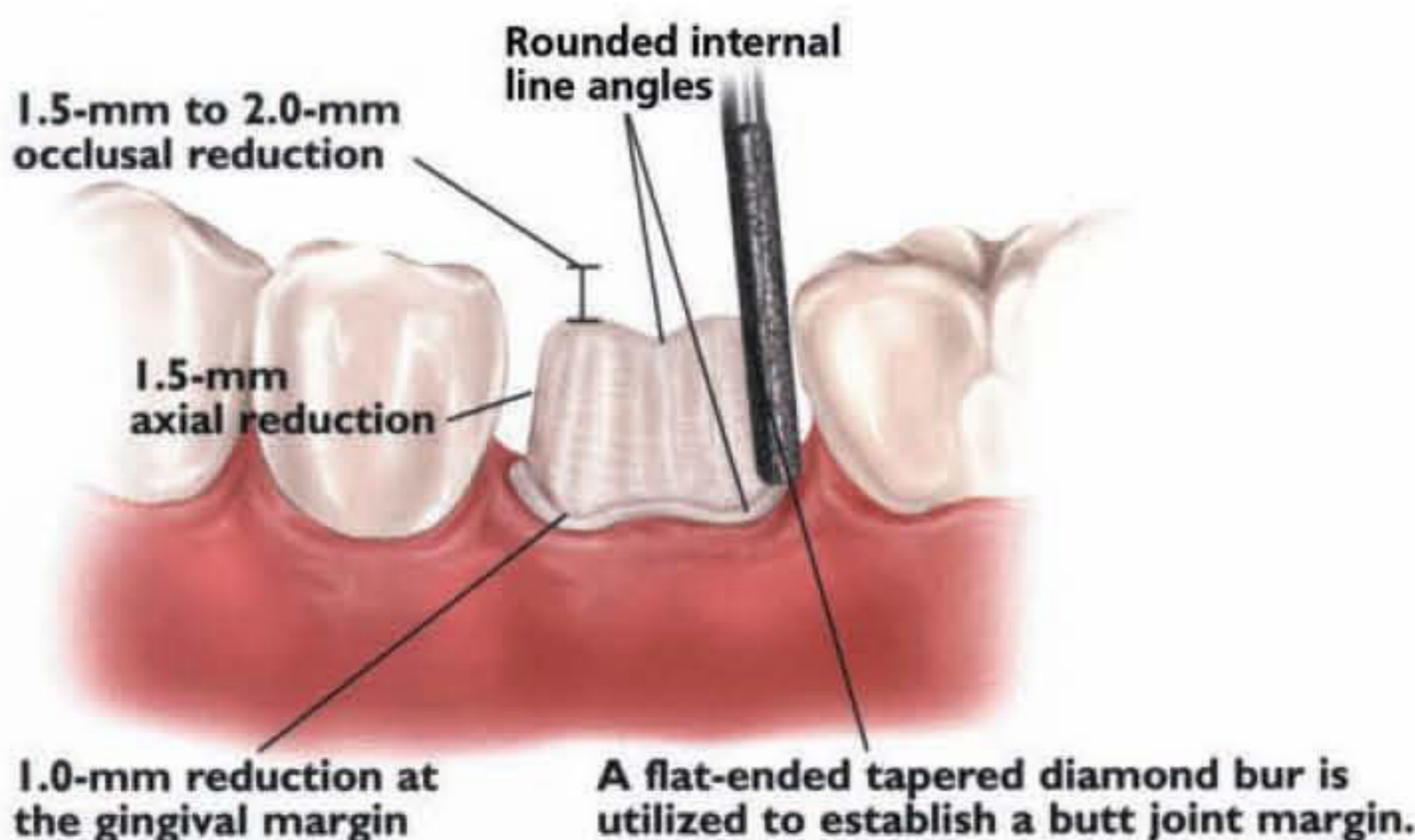
## 3-Unit Bridge Restorations

### 3-UNIT BRIDGE PREPARATION

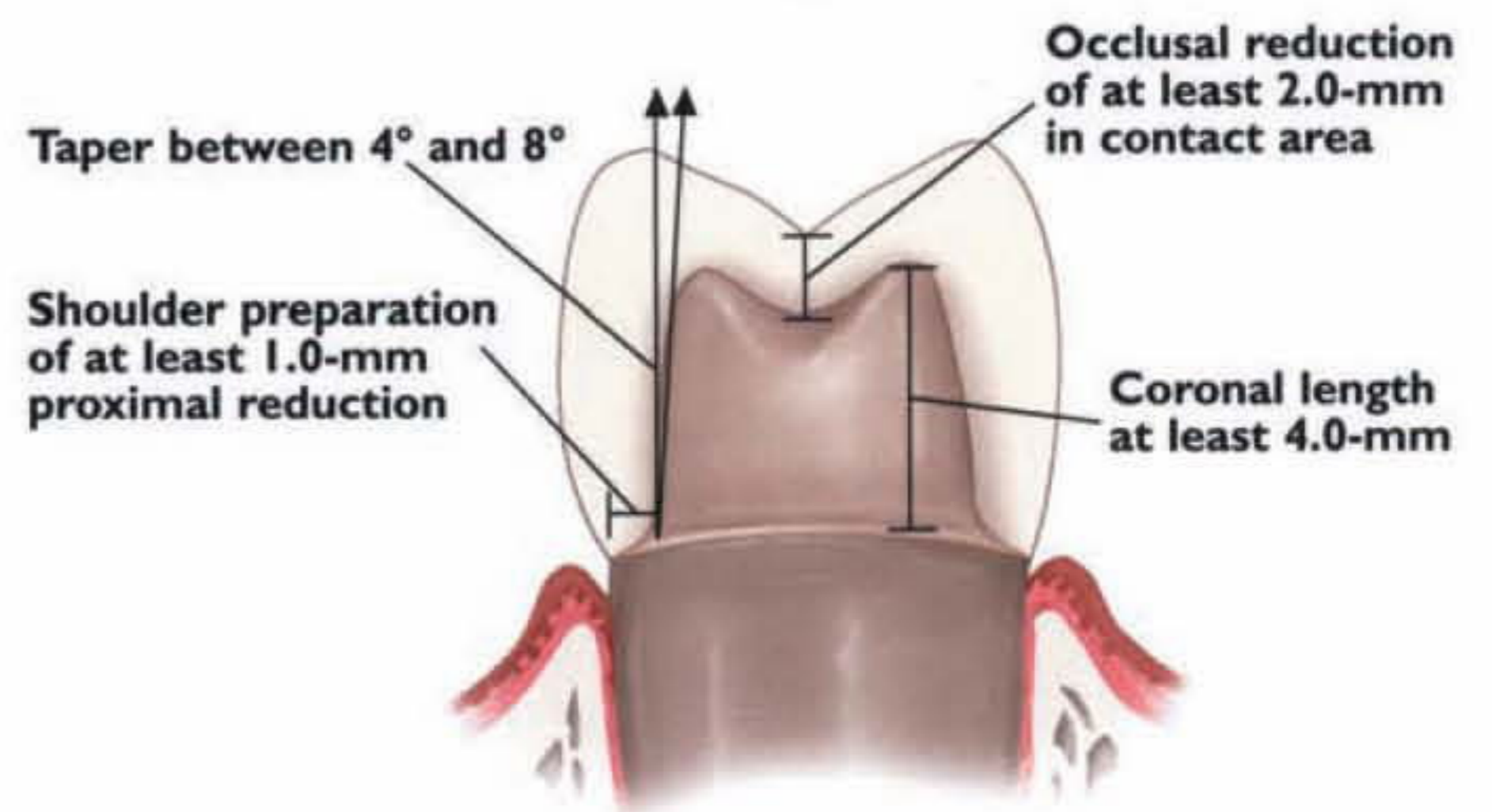


## Full-Coverage Restorations

### POSTERIOR CROWN PREPARATION



### CONVENTIONAL CEMENTATION PREPARATION



When layered or pressed ceramic margins are preferred in conjunction with a zirconia framework, enhanced gingival esthetics can be achieved with a definitive 90 degree shoulder preparation.

[www.ivoclarvivadent.us](http://www.ivoclarvivadent.us)

For information on these or any other Ivoclar Vivadent products, please call us toll free at 1-800-533-6825 in the U.S., 1-800-263-8182 in Canada. [www.ivoclarvivadent.us](http://www.ivoclarvivadent.us) ©2006 Ivoclar Vivadent, Inc. IPS e.max and IPS Empress are registered trademarks of Ivoclar Vivadent, Inc. 12/2006 #604217  
All illustrations ©2003 Montage Media Corporation

100% CUSTOMER SATISFACTION  
GUARANTEED!